



# CHRYSLER

## MODELS / MODELLE

300 Series	Compass	Intrepid	Prowler	Stealth	Wrangler
Alliance	Crossfire	Jeep	PT Cruiser	Stratus	
Avenger	Dodge	Liberty	RAM Truck	Stratus Cabrio	
Caliber	Eagle	Neon	Sebring	Truck	
Caravan	Grand Caravan	Nitro	Sebring Convertible	Viper	
Cherokee	Grand Cherokee	Patriot	Sprinter	Vision	
Commander				Voyager	

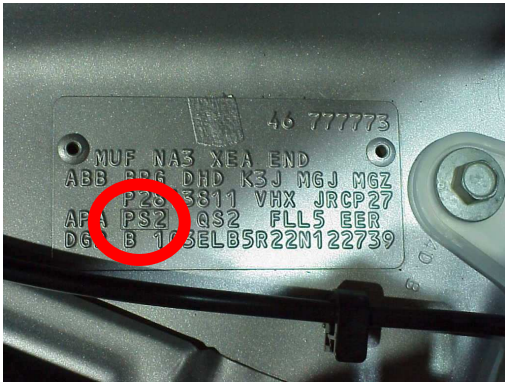
## VIN / TYPENSCHILD

**VIN PLATE LOCATIONS**

1. Neon, Sebring
2. Wrangler
3. Stratus Cabrio
4. PT Cruiser
5. Stratus, Voyager
6. Grand Cherokee



**VIN PLATE LOCATION  
GRAND CHEROKEE**

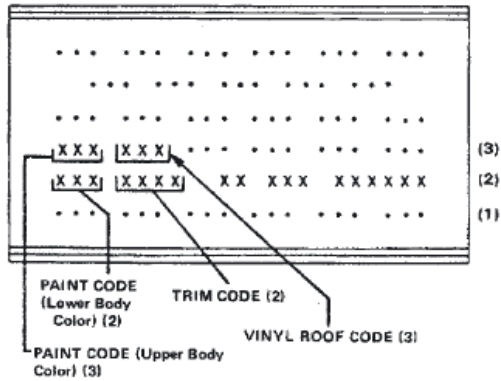


**VIN PLATE CHRYSLER  
PAINTCODE = PS2**

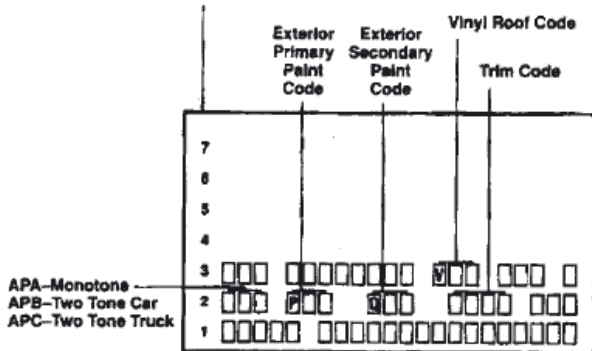
# VIN / TYPENSCHILD

## COLOR IDENTIFICATION PLATE

→ 1993

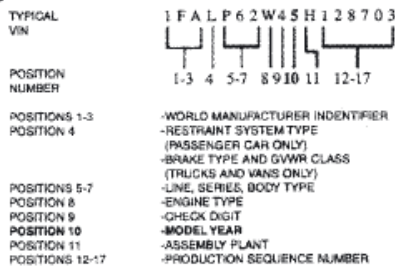


1993 →



# VINformation

### CHECK THIS EXAMPLE





### 1st Position of the VIN# (Vehicle Identification Number)

This digit breaks down the Country of Production for a vehicle sold in the U.S.A.

- 1=USA (Domestic Manufacturer)
- 2=Canada (All Manufacturers)
- 3=Mexico (All Manufacturers)
- 4=USA (Captive Imports and/or Joint Ventures)
- J= Japan (All Manufacturers)
- K=Korea (All Manufacturers)
- W=Germany (All Manufacturers)
- X=Former Soviet Union (All Manufacturers)

VIN Model Year ID 10th Character	Model Year
A	1980
B	1981
C	1982
D	1983
E	1984
F	1985
G	1986
H	1987
J	1988
K	1989
L	1990
M	1991
N	1992
P	1993
R	1994
S	1995
T	1996
V	1997
W	1998
X	1999
Y	2000
1	2001
2	2002
3	2003
4	2004
5	2005

**SHARED MODELS & COLORS / GEMEINSAME MODELLE & FARBTOENE**

		<p>Shared colors</p>	<p>Shared paintcodes</p>
<p><b>Stealth</b></p>	<p><b>300GT</b></p>	<p>Yes</p>	<p>Partly</p>